

# Choosing childcare

- creches
- full day care
- sessional day care
- out of school
- open access play

Finding the **right childcare** for **your child** isn't always easy.

Here are some **tips** from our inspectors:



- 1** Use our **website** – read our reports. Are they registered with us?
- 2** Go **along for a visit** and take a list of questions, or a copy of our latest report.
- 3** Visit **several places** if you can, and go at different times of day to observe the levels of activity.

## What to look for:

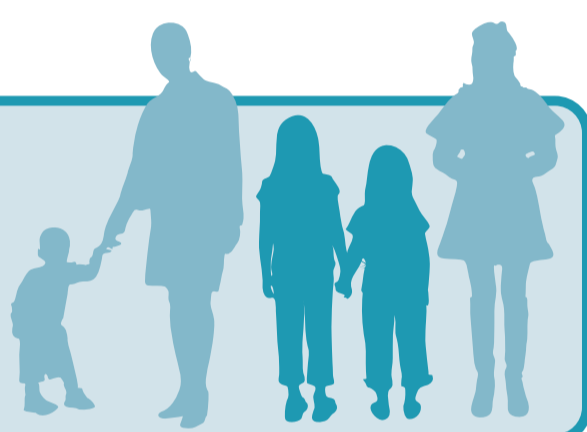
Do the staff make **you** and **your child** feel **welcome**?



Are the premises **clean** and welcoming with a **safe** outside play area?



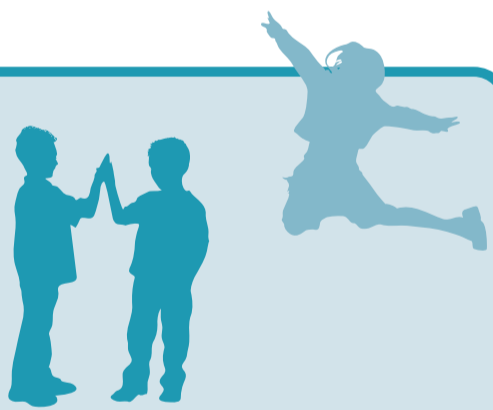
What is the **ratio** of staff to children? Do they offer a 'settling in' period?



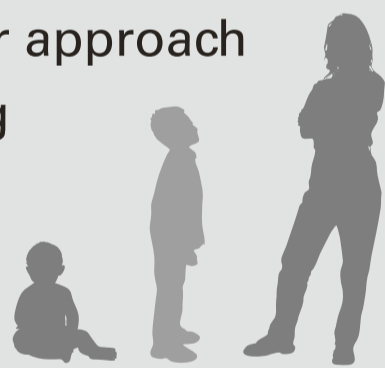
What **qualifications** and **experience** do they have?



Do the children appear to be **busy**, **happy** and at **ease**?



What is their approach to managing challenging behaviour?



What are the **daily routines**?

Will the service provide **healthy food options** and ensure your child has good opportunities for **exercise** and rest?



Will the service **provide meals** and **snacks** for your child?



Or will **you** need to provide them?



Your local authority's website will also have information on care services in your area.

 [www.careinspectorate.wales](http://www.careinspectorate.wales)

 [CIW@gov.wales](mailto:CIW@gov.wales)

 [@care\\_inspectorate](https://twitter.com/care_inspectorate) #choosingcare

 [CSSIW](https://www.youtube.com/channel/UCSSIW)

 Arolygiaeth Gofal  
**Cymru**  
Care Inspectorate  
**Wales**